

HARI VIDYA BHAWAN

Winter Holiday Homework

Session – 2020–21

Class-IX

General Instructions:-

- Students do your holiday homework in your subject notebook.
- Neatness and presentability of the work are common parameters for the activities assigned.
- Revise the whole syllabus thoroughly.

English

1. Paragraph writing:

- One day you were commuting in a DTC bus. Unfortunately, your wallet was left at home. The conductor gave you the ticket for free. You are moved by his gesture. Write a paragraph in about 100-150 words.

2. Character sketch:

- What do you learn about the three main character 'Jerome' 'Harris' and 'George' from the play PACKING?

3. Creative thinking:

- 'THE LAST LEAF' story shows the power of mind. Discuss in about 100-150 words.

Hindi

I. लेखन –पक्ष

प्रश्न 1. श्रीमती शर्मा और फल वाले के बीच फल खरीदते संबंधित संवाद लिखिए।

प्रश्न 2. चमक वाशिंग पाउडर तथा हिमालय मिनरल वाटर पर आकर्षक विज्ञापन बनाओ।

प्रश्न 3. मित्र के बड़े भाई को नौकरी मिलने की खुशी में बधाई देने के लिए मित्र को पत्र लिखिए।

II. पाठ्य- पुस्तक:

प्रश्न 1. पाठ्य पुस्तक स्पर्श के गद्यांश भाग के अध्याय तथा काव्यांश की कविताओं के प्रश्न उत्तर याद कीजिए।

प्रश्न 2. पाठ्य पुस्तक संचयन के अध्यायों के प्रश्न उत्तर याद कीजिए।

III. व्याकरण:

प्रश्न 1. व्याकरण के अंतर्गत आए हुए अध्यायो का अभ्यास कीजिए।

पाठ 1. अनुनासिक अनुस्वार तथा आगत शब्द

पाठ 2. वर्ण विच्छेद

पाठ 3. उपसर्ग तथा प्रत्यय

पाठ 4. संधि

पाठ 5. विराम चिन्ह

Social Science

Map Work (GEOGRAPHY) India Political Map

CH-1 (India-Size and Location) (Locate and Label)

- The state which shares its boundaries with China, Nepal, Bhutan, Pakistan.
- Tropic Of Cancer
- Southern most point India
- Latitude which divides India into two equal halves.

CH-2 (Physical Features of India)

- The Islands
- Coastal plains
- The Peninsular plateau
- The Great Indian Desert
- Northern Plains
- The Himalayan mountains

CH-3 (Drainage)

- Largest fresh water lake in India
- Himalayan Rivers
- Peninsular Rivers
- Salt Water Lakes

Writing Work

SHORT QUESTIONS

- Q1. How did the use of modern farming methods prove beneficial for Indian farmers?
- Q2. What are the disadvantages in using chemical fertilizers?
- Q3. What do you know about India and her neighbours?
- Q4. Mention three features of democracy.

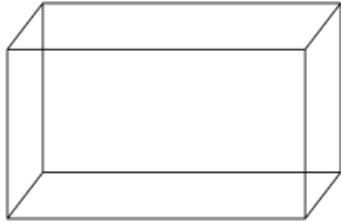
LONG ANSWER QUESTIONS

- Q1. What is the aim of production? What are its factors?
- Q2. Distinguish between traditional methods of farming and modern methods of farming.
- Q3. India occupies an important strategic position in South Asia. Explain.

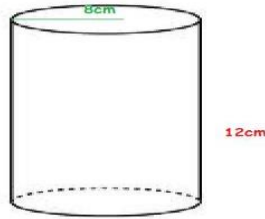
Mathematics

1. Compile 10 different type of data from your day-to-day activities and sort them as primary or secondary data.
 - **Primary data** is data that is collected by a researcher from first-hand sources, using methods like surveys, interviews, or experiments. It is collected with the **research** project in mind, directly from primary sources. The term is used in contrast with the term secondary data.
 - **Secondary data** refers to **data** that is collected by someone other than the primary user. Common sources of **secondary data** for social science include censuses, information collected by government departments, organizational records and **data** that was originally collected for other research purposes.

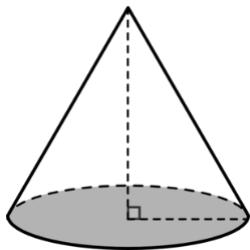
- Make any one graph out of bar graph, histogram and frequency polygon of any one data collected by you in previous question.
- Click photos of things around you which resembles shapes given below (two photos each) and make a collage of it.



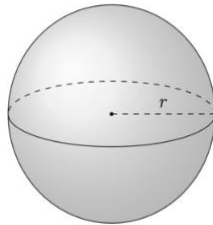
cuboid



cylinder



Cone



sphere

4. Write True or False:

Give reasons for your answers.

- Line segment joining the centre to any point on the circle is a radius of the circle.
- A circle has only finite number of equal chords.
- If a circle is divided in to three equal arcs, each is a major arc.
- A chord of a circle, which is twice as long as its radius, is a diameter of the circle.
- Sector is the region between the chord and its corresponding arc.
- A circle is a plane figure.

5. Fill in the blanks:

- The coordinates of the origin are _____.
- coordinates of a point on the x-axis are of the form _____ and that of the point on the y-axis are _____.
- The coordinates of a point are of the form $(+, +)$ in the _____, $(-, +)$ in the _____, $(-, -)$ in the _____ and $(+, -)$ in the _____, where $+$ denotes a positive real number and $-$ denotes a negative real number.
- The horizontal line is called the _____, and the vertical line is called the _____.

Riddle-Time

- How can you add eight 8's to get the number 1,000? (only use addition).



2. Two Fathers and Two Sons Riddle

Two fathers and two sons sat down to eat eggs for breakfast. They ate exactly three eggs, each person had an egg. The riddle is for you to explain how.

3. Digit Frequency

Part I. What digit is the most frequent between the numbers 1 and 1,000 (inclusive)? To solve this riddle you don't want to manually do all of the math but rather try to figure out a pattern.

4. Three Guys at A Hotel Riddle

Three guys rent a hotel room for the night. When they get to the hotel they pay the \$30\$30 fee, then go up to their room. Soon the bellhop brings up their bags and gives the lawyers back \$5\$5 because the hotel was having a special discount that weekend. So the three lawyers decide to each keep one of the \$5\$5 dollars and to give the bellhop a \$2\$2 tip. However, when they sat down to tally up their expenses for the weekend they could not explain the following details:

Each one of them had originally paid \$10\$10 (towards the initial \$30\$30), then each got back \$1\$1 which meant that they each paid \$9\$9. Then they gave the bellhop a \$2\$2 tip. HOWEVER, $3 \cdot \$9\$9 + \$2\$2 = \$29\29 .

The guys couldn't figure out what happened to the other dollar. After all, the three paid out \$30\$30 but could only account for \$29\$29.

Can you determine what happened?

NOTE: Try these riddles yourself first then visit below given link for solutions and more such riddles.

<https://www.mathwarehouse.com/riddles/math-riddles.php>

Science

Learn and write the answer of the following questions in your notebook.

Physics

- Q.1 What is power? Write SI unit of it.
- Q.2 Define 1 joule of work .
- Q.3 What is the kinetic energy of a body of mass 1 kg moving with a speed of 2 ms^{-1} ?
- Q.4 How fast should a man of 50 kg run so that his kinetic energy be 625 J?

- Q.5 State whether the following objects possess kinetic energy, potential energy or both:
 (a) A man climbing a hill
 (b) A flying aeroplane
 (c) A bird running on the ground
- Q.6 How much electrical energy in kWh is consumed by an electrical appliance of 1000 watts when it is switched on for 60 minutes?
- Q.7 When a tree is shaken, its fruits and leaves fall down. Why?
- Q.8 A boy of mass 50kg running at 5 m/s jumps on to a 20 kg trolley travelling in the same direction at 1.5 m/s. What is their common velocity?
- Q.9 Why does a gunman get a jerk on firing a bullet?
- Q.10 What is pressure? Write the SI unit of pressure.
- Q.11 Explain why, the tip of sewing needle is sharp.
- Q.12 Explain why, snow shoes stop you from sinking into soft snow.
- Q.13 What is retardation?
- Q.14 What is the difference between scalar quantity and vector quantity?
- Q.15 Using Following data, draw displacement-Time graph for a moving object:

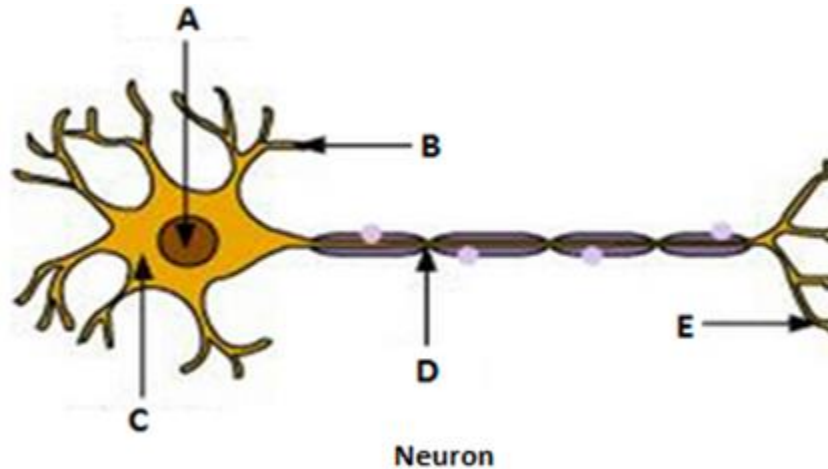
Time (in hours)	0	2	4	6	8	10	12
Displacement (in meter)	0	2	4	4	4	6	4

Chemistry

- Q.1 Write the distribution of electrons in carbon and sodium atoms.
- Q.2 What are ionic compounds? Give one example.
- Q.3 What is the law of chemical combination?
- Q.4 Define atomicity.
- Q.5 Define atomic mass unit.
- Q.6 Find the ratio between hydrogen and sulphur in H_2S ? (Atomic mass of H- 1 u and S- 32 u)
- Q.7 Write down the formula of following compounds:
 (a) Calcium hydroxide (b) Aluminium sulphate
 (c) Zinc carbonate (d) Barium chloride
- Q.8 How many moles are represented by 100 g of glucose, $C_6H_{12}O_6$? (C= 12 u, H= 1 u, O= 16 u)
- Q.9 What is Mole concept?
- Q.10 Calculate the number of moles in 62 g of Sodium oxide (Na_2O). If Mass number of sodium and oxygen is 23 u and 16 u respectively.
- Q.11 Calculate the molecular mass of the following:
 (a) Na_2SO_4 (b) $AlCl_3$
- Q.12 Write the atomicity of-
 (a) P_4 (b) CH_4
 (c) N_2 (d) NH_3
- Q.13 What are the polyatomic ions? Give examples.
- Q.14 Q.6 An element Z has valency of 3. What is the formula of its oxide?
- Q.15 Name the particle which has 18 electrons, 18 neutrons and 17 protons in it.

Biology

Q.1 Label for the parts A, B, C, D and E in the following diagram of Nerve cell:



- Q.2 Differentiate between Blood and lymph.
- Q.3 What is synapse?
- Q.4 Which type of tissue helps in locomotion (movement)?
- Q.5 Explain glandular epithelial tissues.
- Q.6 What are involuntary muscles? Where are they found?
- Q.7 Write a short note on blood.
- Q.8 Briefly describe striated and smooth muscles with their functions
- Q.9 Name two air borne diseases.
- Q.10 Differentiate between infectious and non-infectious disease.
- Q.11 Write the difference between acute and chronic diseases.
- Q.12 What are antibiotics?
- Q.13 Who is called power house of the cell?
- Q.14 Why is lysosomes called suicide bag of the cell?
- Q.15 Who was discovered the cell and how?

Information Technology

Write answers of the following question in your notebook.

- Q.1 What are the advantages of find and replace feature of word processor?
- Q.2 What is clipboard?
- Q.3 State one difference Undo & Redo.
- Q.4 What is Ms. Word Thesaurus?
- Q.5 Write the methods change text chase in MS- Word.
- Q.6 What is subscript and superscript in MS-Word text formatting? Explain with example of each?

- Q.7 Write steps to delete rows and columns in spreadsheet.
- Q.8 Write steps to hide and unhide column or row in spreadsheet.
- Q.9 Write the steps to add new lesson in lesson editor window.
- Q.10 Write three advantages and disadvantages of non-verbal communication.
- Q.11 Name five factor that affects in communication.
- Q.12 State difference between Private Corporation and Public Corporation.
- Q.13 Explain five characteristics of an entrepreneur.
- Q.14 Why it is necessary to conserve fossil fuel and natural gases?
- Q.15 Why BPO industries doing exceptionally well in India?

HARI VIDYA BHAWAN

Winter Holiday Homework

Session - 2020-21

Class – X

General Instructions:

- Students do your holiday homework in your subject notebook.
- Neatness and presentability of the work are common parameters for the activities assigned.
- Revise the whole syllabus thoroughly.

English

Q 1. Describe the following proverbs in your own words not more than 30 words: -

1. No gain without pain.
2. All's well that ends well.
3. Simple living and high thinking.

Q 2. Write 10 words starting with alphabet 'A' and also write two antonyms of each word.

Q 3. Write 10 words starting with alphabet 'B' and also write one synonym of each word.

Q 4. Suppose that you went for a morning walk and caught in a heavy storm, how did you manage to save yourself. Compose a story within 150 words.

NOTE: - Complete all the work in your English Notebook, and send the scanned folder on spackhiam@gmail.com by 15th of January 2021.

हिंदी

सामान्य निर्देश – दिया गया कार्य अपनी व्याकरण की कॉपी में करिए।

लेखन -पक्ष

प्रश्न 1. विद्यालय में हो रही कविता प्रतियोगिता हेतु 30- 40 शब्दों में सूचना लिखिए।

प्रश्न 2. पुराने घरेलू फर्नीचर बेचने के लिए 25 से 30 शब्दों में आकर्षक विज्ञापन बनाओ।

प्रश्न 3. नगर में बढ़ते हुए अपराधों पर चिंता व्यक्त करते हुए जिलाअधिकारी को एक पत्र लिखिए , जिसमें संबंधित पुलिस अधिकारी का ध्यान आकर्षित करने का अनुरोध हो।

प्रश्न 4. दो मंत्रियों के मध्य देश की अर्थव्यवस्था के विषय में संवाद को दर्शाइए।

पाठ्य- पुस्तक

प्रश्न 1. पाठ्य पुस्तक स्पर्श के गद्यांश भाग के अध्याय तथा काव्यांश की कविताओं के प्रश्न उत्तर याद कीजिए।

प्रश्न 2. पाठ्य पुस्तक संचयन के अध्यायों के प्रश्न उत्तर याद कीजिए।

व्याकरण

प्रश्न 1. व्याकरण के अंतर्गत आए हुए अध्यासों का अभ्यास कीजिए।

पाठ 1. शब्द- पद

पाठ 2. समास

पाठ 3. वाक्य -रूपांतरण

पाठ 4. अशुद्ध वाक्यों का शोधन

पाठ 5. मुहावरे।

Mathematics

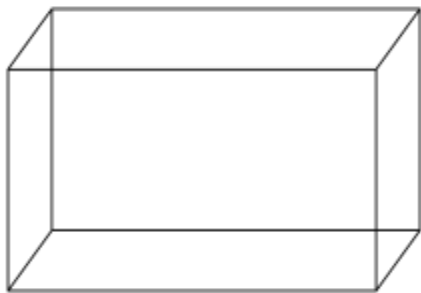
Q1. Compile 10 different type of data from your day-to-day activities and sort them as primary or secondary data.

- **Primary data** is data that is collected by a researcher from first-hand sources, using methods like surveys, interviews, or experiments. It is collected with the **research** project in mind, directly from primary sources. The term is used in contrast with the term secondary data.
- **Secondary data** refers to **data** that is collected by someone other than the primary user. Common sources of **secondary data** for social science include censuses, information collected by government departments, organizational records and **data** that was originally collected for other research purposes.

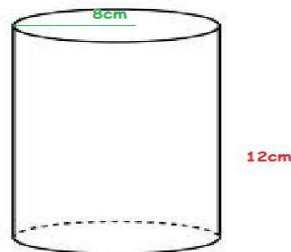
Q2. Find mean, median and mode of any one data collected by you in previous question and verify the relationship between mean, median and mode.

i.e $\text{Mode} = 3(\text{Median}) - 2(\text{Mean})$.

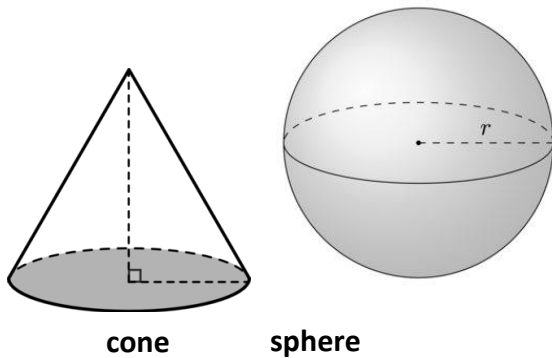
Q3. Click photos of things around you which resembles shapes given below (two photos each) and make a collage of it.



cuboid



cylinder



cone

sphere

Q4. The pair of equations $x + 2y - 5 = 0$ and $-3x - 6y + 15 = 0$ have:

- (A) A unique solution (B) Exactly two solutions
 (C) Infinitely many solutions (D) No solution

Q5. Which of the following pair of linear equation is consistent?

- (A) $x+5=5, 2x+2y=10$ (B) $x-y=8, 3x-3y=16$
 (C) $2x+6y-6=0, 4x-12y=0$ (D) $2x-2y-2=0, 4x-4y-5=0$

Q6. Meena went to a bank to withdraw Rs.2,000. She asked the cashier to give her Rs.50 and Rs.100 notes only. Meena got 25 notes in all. Find how many notes of Rs.50 and Rs.100 she received.

Q7. If 5, k, 11 are in A.P., the value of k is:

- (A) 6 (B) 8 (C) 7 (D) 9

Q8. Evaluate.

(i) $\sin^2 \theta + \frac{1}{(1 + \tan^2 \theta)} = 1$
 (ii) $\frac{1}{(1 + \tan^2 \theta)} + \frac{1}{(1 + \cot^2 \theta)} = 1$

Q9. Name the type of quadrilateral formed, if any, by the following points, and give reasons for your answer:

- (i) $(-1, -2), (1, 0), (-1, 2), (-3, 0)$
 (ii) $(-3, 5), (3, 1), (0, 3), (-1, -4)$
 (iii) $(4, 5), (7, 6), (4, 3), (1, 2)$

Q10. A motorboat covers a distance of 16km upstream and 24km downstream in 6 hours. In the same time, it covers a distance of 12 km upstream and 36km downstream. Find the speed of the boat in still water and that of the stream.

Riddle-Time

1. How can you add eight 8's to get the number 1,000? (only use addition).



2. Two Fathers and Two Sons Riddle

Two fathers and two sons sat down to eat eggs for breakfast. They ate exactly three eggs; each person had an egg. The riddle is for you to explain how.

3. Digit Frequency

Part I. What digit is the most frequent between the numbers 1 and 1,000 (inclusive)? To solve this riddle, you don't want to manually do all of the math but rather try to figure out a pattern.

4. Three Guys at A Hotel Riddle

Three guys rent a hotel room for the night. When they get to the hotel, they pay the \$30\$30 fee, then go up to their room. Soon the bellhop brings up their bags and gives the lawyers back \$5\$5 because the hotel was having a special discount that weekend. So, the three lawyers decide to each keep one of the \$5\$5 dollars and to give the bellhop a \$2\$2 tip. However, when they sat down to tally up their expenses for the weekend, they could not explain the following details:

Each one of them had originally paid \$10\$10 (towards the initial \$30\$30), then each got back \$1\$1 which meant that they each paid \$9\$9. Then they gave the bellhop a \$2\$2 tip. HOWEVER, 3
• $\$9\$9 + \$2\$2 = \$29\29 .

The guys couldn't figure out what happened to the other dollar. After all, the three paid out \$30\$30 but could only account for \$29\$29.

Can you determine what happened?

NOTE: Try these riddles yourself first then visit below given link for solutions and more such riddles.

<https://www.mathwarehouse.com/riddles/math-riddles.php>

Science

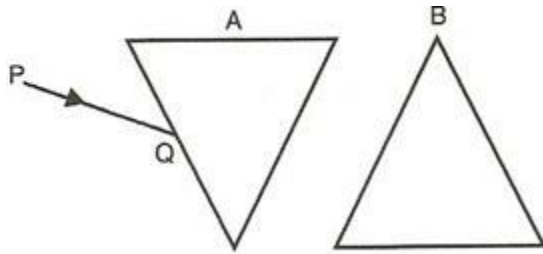
PHYSICS:

1. The diagram below shows two identical prisms A and B placed with their faces parallel to each other.

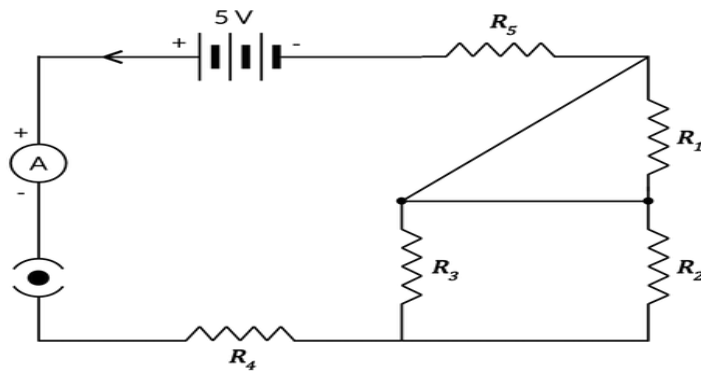
A ray of light of single color

PQ is incident at the face of the prism A. Complete the diagram to show

the path of the ray till it emerges out of the prism B.



2. Consider the following electric circuit.



(i) Which two resistors are connected in series?

(ii) Which two resistors are connected in parallel?

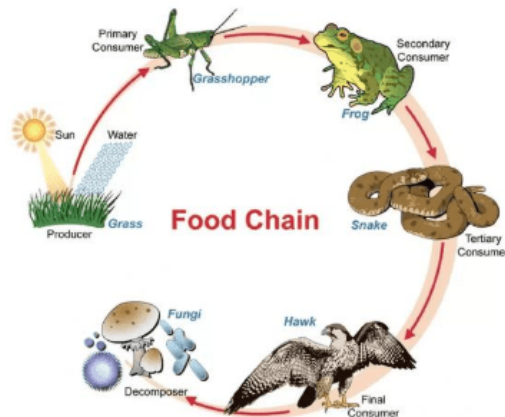
(iii) If every resistor is $2\ \Omega$, what current will flow in the circuit?

3. A hot plate of an electric oven connected to a 220 V line has two resistance coils A and B, each of $24\ \Omega$ resistance, which may be used separately, in series or in parallel. What are the currents in the three cases?
4. Define electromagnetic induction. Two circular coils A and B are placed close to each other. If the current in the coil A is changed, will some current be induced in the coil B?
5. A dentist uses a mirror in front of a decayed tooth at a distance of 4 cm from the tooth to get a four times magnified image in the mirror. Use mirror formula to find the focal length and nature of the mirror used.
6. Draw a well labelled diagram of an electric motor.

BIOLOGY:

1. Why the tracheal wall is supported by 'C' shaped cartilaginous rings?
2. Differentiate between excretion and egestion.

3. Observe the diagrams given below and answer the questions given :



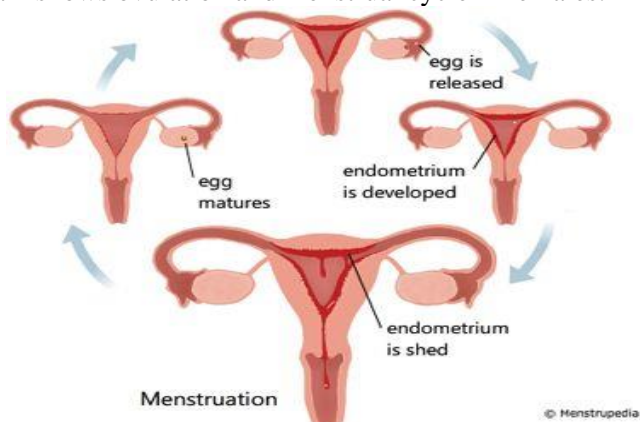
- (i) If number frogs shown in above food chain, is suddenly reduced, then what can be different effects on the food chain?
- (ii) Which components of the above food chain, if lost will reflect upon the process of decomposition? What will be the effect of this on the ecosystem?
- (iii) If the energy transferred to a tertiary consumer in a food chain is 10 J , how much energy was available to the primary consumer ?

4. A man with type A blood has a wife with type B. They have a child with type O blood. Give the genotype of all the three. What other blood groups can be expected in the future offspring of this couple?

5. Draw the sectional view of the human heart and label the following parts given below:

- (i) Chamber where oxygenated blood from lungs is collected.
- (ii) The largest blood vessel in our body.
- (iii) The muscular wall separating the right and left chambers.
- (iv) The blood vessel that carries blood from the heart to the lungs.

6. The diagram shows ovulation and menstrual cycle in females.



Using the above diagram , answer the following questions:

- (i) At what age the sex hormones are released into a female body?
- (ii) How the uterus prepares every month to receive a fertilised egg?
- (iii) What happens if the egg is not fertilised?
- (iv) How ovulation takes place?
- (v) When does menstruation occur after ovulation ?

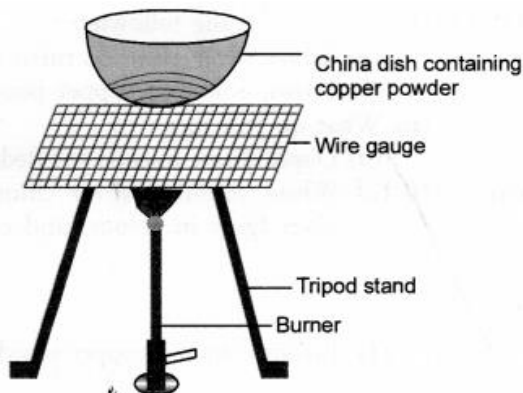
CHEMISTRY:

1. The three elements A , B and C with similar properties have atomic masses X,Y and Z respectively. The mass of Y is approximately equal to the average mass of X and Z . What is such an arrangement of elements is called? Give one example of such a set of elements.
2. If the number of electrons in the outermost shell of elements C and G be 3 and 7 respectively, write the formula of the compound formed by the combination of C and G.
3. **The following table shows the position of six elements A, B, C, D, E and F in the period table.**

Groups/	1	2	3-12	13	14	15	16	17	18
Periods									
2	A					B			C
3		D			E				F

Using the above table answer the following questions:

- (a) Which element will form only covalent compounds?
 - (b) Which element is a metal with valency 2?
 - (c) Which element is a non-metal with valency of 3 ?
 - (d) Out of D and E , which one has more atomic radius and why?
 - (e) Write a common name for the family of elements C and F.
4. A substance X is used as a building material and is insoluble in water. When reacted with dilute HCl, it produces a gas which turns lime water milky. Predict the substance. Write the chemical equations involved.
 5. An element A burns with golden flame in air. It reacts with another element B, atomic number 17 to give a product C. An aqueous solution of product C on electrolysis gives a compound D and liberates hydrogen. Identify A, B, C and D. Also write down the equations for the reactions involved.
 6. Study the given diagram and answer the following questions:



- (a) Write the chemical reaction involved in the process.
 (b) Mention the colour of :

1. copper powder and
2. the substance formed after heating it.

- (c) How can we reverse the above reaction? Write the equation for the reverse reaction and state the substance that undergoes oxidation and the substance that undergoes reduction.

Social Science

Instructions: -

- Learn all questions and do in your notebook.
- Do maps in your notebook.

MAP WORK (HISTORY)

CH-3 Nationalism in India (Outline Political Map of India) (Locating, Labelling/ Identification)

1. Indian National Congress Sessions

- Calcutta (Sep 1920)
- Nagpur (Dec 1920)
- Madras (1927)

2. Important Centre's of Indian National Movement

- Champaran (Bihar) – Movement of Indigo Planters
- Kheda (Gujarat) – Peasants Satyagraha
- Ahmedabad (Gujarat) – Cotton Mill Workers Satyagraha
- Amritsar (Punjab) – Jallianwala Bagh Incident
- Chauri Chaura (U.P) – Calling off the Non- Cooperation Movement.
- Dandi (Gujarat) – Civil Disobedience Movement

MAP WORK (GEOGRAPHY)

CH-1 Resources and Development (Outline Political Map of India) (Identification only)

- Major Soil Types

CH-3 Water Resources ((Locating, Labelling)

- Dams – Salal, Bhakra Nangal, Tehri, Rana Pratap Sagar

CH-4 Agriculture (Identification only)

- Major areas of Rice and Wheat
- Largest /Major producer states of Sugarcane, Tea, Coffee, Rubber, Cotton and Jute

CH-5 Minerals and Energy Resources Minerals (Identification only)

- Iron Ore mines – Mayurbhanj, Durg, Bailadila
- Coal Mines – Raniganj, Bokaro
- Oil Fields – Digboi, Naharkatia, Mumbai High, Bassien, Kalol, Ankaleshwar

Power Plants (Locating and Labelling)

- Thermal – Namrup, Singrauli
- Nuclear – Narora, Kakrapara

CH-6 Manufacturing Industries (Locating and Labelling)

- Cotton Textile Industries – Mumbai, Indore, Surat
- Iron and Steel Plants – Durgapur, Bokaro, Jamshedpur
- Software Technology Parks- Noida, Gandhinagar, Mumbai, Pune

CH-7 Lifelines of National Economy (Locating and Labelling)

- Major ports – Kandla, Mumbai, Marmagao, New Mangalore, Kochi, Chennai, Haldia, Paradip etc
- International Airports – Amritsar (Raja Sansi)
Delhi (Indira Gandhi International)
Mumbai (Chhatrapati Shivaji)
Chennai (Meenam Bakkam)
Kolkata (Netaji Subhash Chandra Bose)
Hyderabad (Rajiv Gandhi)

SHORT QUESTIONS

- Q1.** What is the other name for Napoleonic code? Write any four changes brought by this.
- Q2.** Explain the Unification of Germany, Britain and Italy.
- Q3.** Briefly explain Balkan Issue.
- Q4.** How does democracy produce an accountable, responsive and legitimate government?
- Q5.** Compare the employment conditions prevailing in the organised and unorganized sectors.

LONG QUESTIONS

- Q1.** “This sense of collectively belonging came partly through the experience of united struggles role of folklore, songs, icons and images” Analyze the statement.
- Q2.** Describe the Dandi March of Gandhiji.
- Q3.** Examine the role of women in the nationalist struggles of Europe.

- Q4.** Describe any two important characteristics of each type of soil available in India.
Q5. Explain the classification of resources.

Information Technology

Write down the answers of the following questions:

- Q.1.** Explain any two 7Cs of Communication.
Q.2. How many origins can have stress causal?
Q.3. What are the myths about Entrepreneurship? Explain any two.
Q.4. Write down the steps to create a folder in C drive with your name.
Q.5. List down any four factors causing ecological imbalance.
Q.6. Explain any three-character formatting options in a word document.
Q.7. State the purpose of creating Tables in a digital Presentation. Mention two ways to insert a table in a presentation.
Q.8. Define the following: Table, Primary Key, Foreign Key
Q.9. Snehal works for an event management company. She has prepared a presentation and while setting up the Slide Show she is getting the following options, explain them briefly.
(i) Presented by a speaker
(ii) Browsed by an individual
(iii) Browsed at a Kiosk.
Q.10. What is DDL and DML? Give one example of each.
Q.11. Rohan's Grandfather was wondering that how does Rohan chat on web with his father posted in California, Elaborate the steps involved while transferring data over internet.
Q.12 d. Elaborate the five types of Views available in a spreadsheet.
Q.13. Write the points to be kept in mind to make an effective presentation for the audience (Mention any 5 Points)